



65W Dual Output Me

MP



S :  
 AC input / Full range  
 ge current <250 A  
 s: Short circuit / Overload / C  
 free air convection  
 approved (2 x MOPP be  
 in test  
 ay at 45KHz

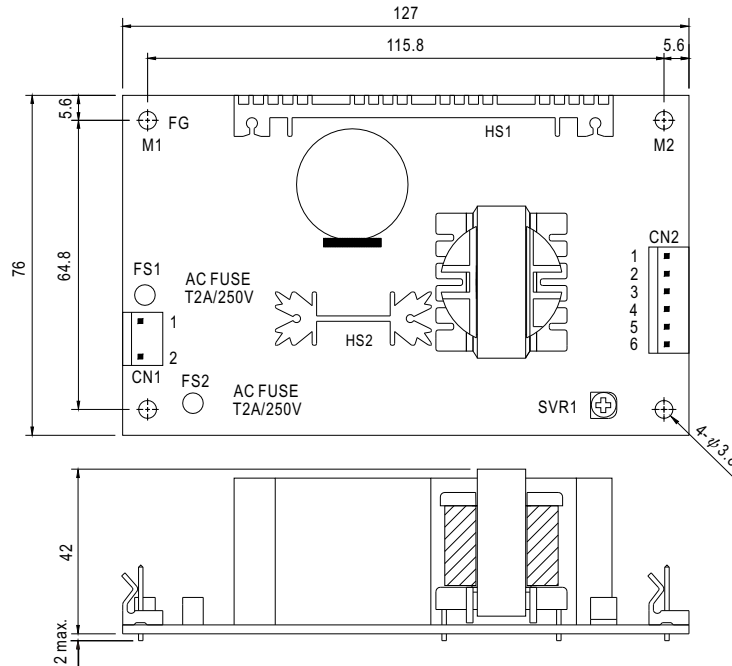
SPECIFICATION

MODEL		
OUTPUT NUMBER		
DC VOLTAGE		
ATED CURRENT		2A
RANGE		0.2 ~ 2.6A
		~ 6A
		W
		150mVp-p
		5 ~ 5.5V
		±7.0%
		±2.0%
		±3.0%
		800ms, 20ms/230VAC 800ms, 20ms/230VAC
		80ms/230VAC 12ms/115VAC at full load
		90 ~ 264VAC 127 ~ 370VDC
		47 ~ 440Hz
		75%
		1.6A/115VAC 1A/230VAC
(typ.)		COLD START 20A/115VAC 40A/230VAC
T Note.7		
		73 ~ 105W rated output power
		Protection type : Hiccup mode, recovers automatically after fault condit
		5.75 ~ 6.75VDC on CH1
		Protection type : Hiccup mode, recovers automatically after fault conditio
TEMP.		-10 ~ +55°C (Refer to "Derating Curve")
HUMIDITY		20 ~ 90% RH non-condensing
TEMP., HUMIDITY		-20 ~ +85°C, 10 ~ 95% RH
EFFICIENT		±0.04%/°C (0 ~ 50°C) on +5V output
ION		10 ~ 500Hz, 2G 10min./1cycle, period for 60min. each along X, Y, Z axes
Y STANDARDS		ANSI/AAMI ES60601-1, TUV EN60601-1, IEC60601-1 approved
STAND VOLTAGE		I/P-O/P:4KVAC I/P-FG:2KVAC O/P-FG:0.5KVAC
ATION RESISTANCE		I/P-O/P, I/P-FG:100M Ohms / 500VDC / 25°C / 70% RH
ION		Compliance to EN55011 (CISPR11) Class B, EN61000-3-2,-3
		Compliance to EN61000-4-2,3,4,5,6,8,11, EN60601-1-2, medical level, criteria A
		291.3Khrs min. MIL-HDBK-217F (25°C)
		42mm (L*W*H)
		25CUET

- (as c
- 5. Mounting
- 6. Heat Sink H

■ Mechanical Specification

Unit:mm



AC Input Connector (CN1) : Molex 5277-02 or equivalent

Pin No.	Assignment	Mating Housing	Terminal
1	AC/L	Molex 5195 or equivalent	Molex 5194 or equivalent
2	AC/N		

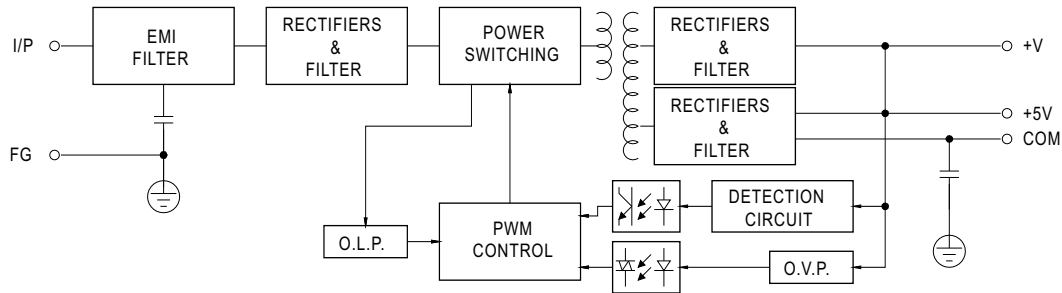
DC Output Connector (CN2) : Molex 5273-06 or equivalent

Pin No.	Assignment	Mating Housing	Terminal
1	+V	Molex 5195 or equivalent	Molex 5194 or equivalent
2,3	+5V		
4,5	COM		
6	NC		

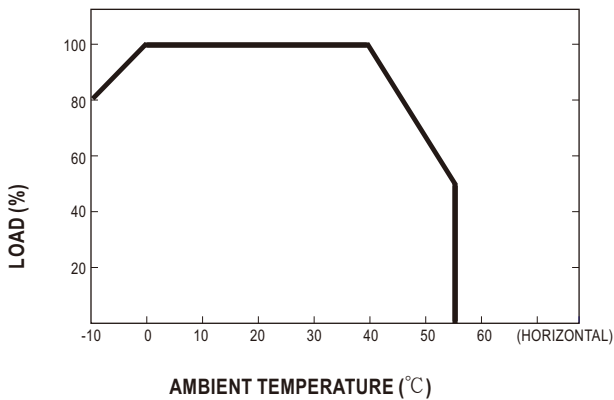
⚠ HS1,HS2 can not be shorted

■ Block Diagram

fosc : 45KHz



■ Derating Curve



■ Static Characteristics

